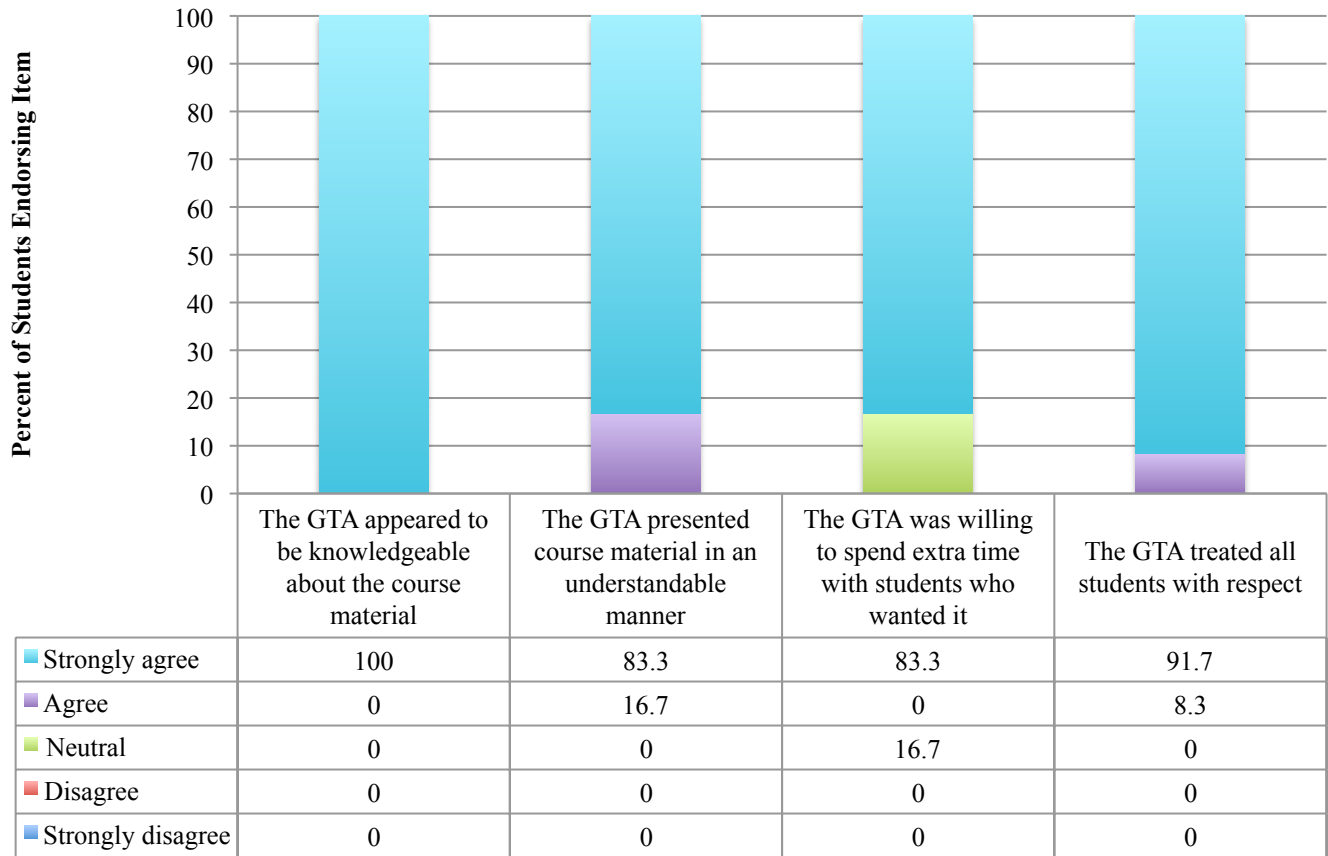
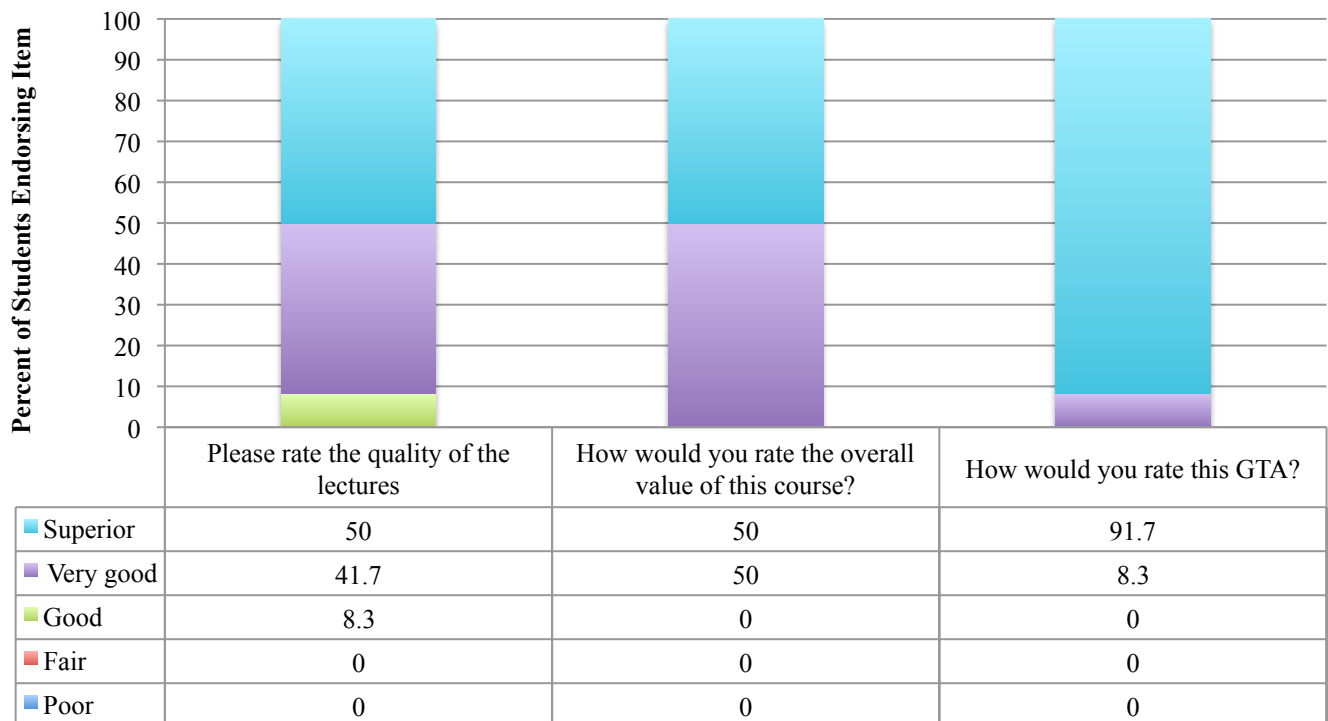


Evaluations for Spring 2013-Class 1



N = 12

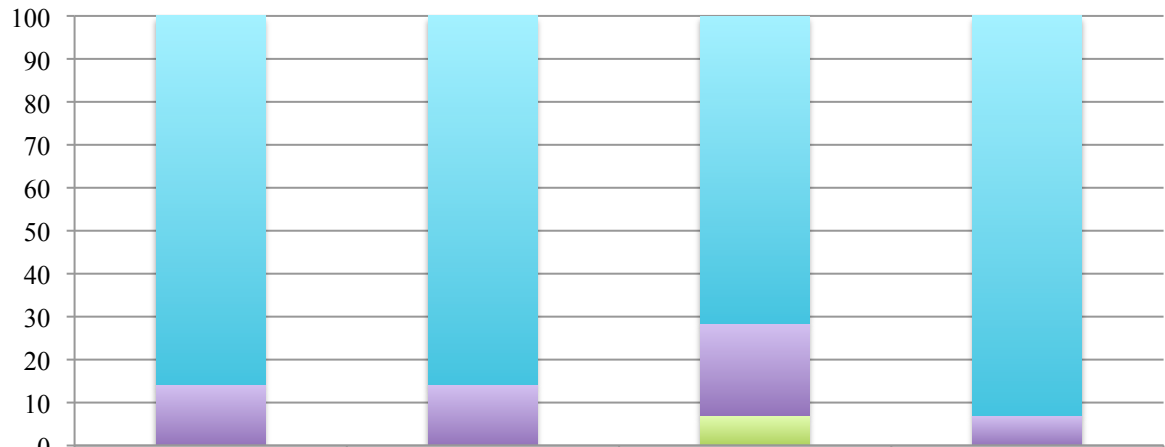
Evaluations for Spring 2013-Class 1



N = 12

Evaluations for Spring 2013-Class 2

Percent of Students Endorsing Item



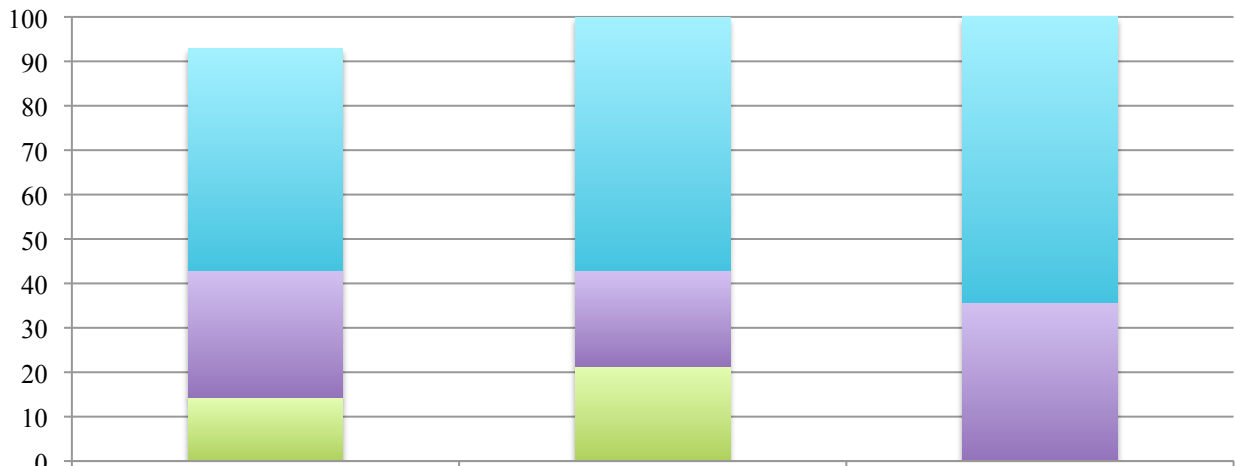
	The GTA appeared to be knowledgeable about the course material	The GTA presented course material in an understandable manner	The GTA was willing to spend extra time with students who wanted it	The GTA treated all students with respect
--	--	---	---	---

Strongly agree	85.7	85.7	71.4	92.9
Agree	14.3	14.3	21.4	7.1
Neutral	0	0	7.1	0
Disagree	0	0	0	0
Strongly disagree	0	0	0	0

N = 14

Evaluations for Spring 2013-Class 2

Percent of Students Endorsing Item

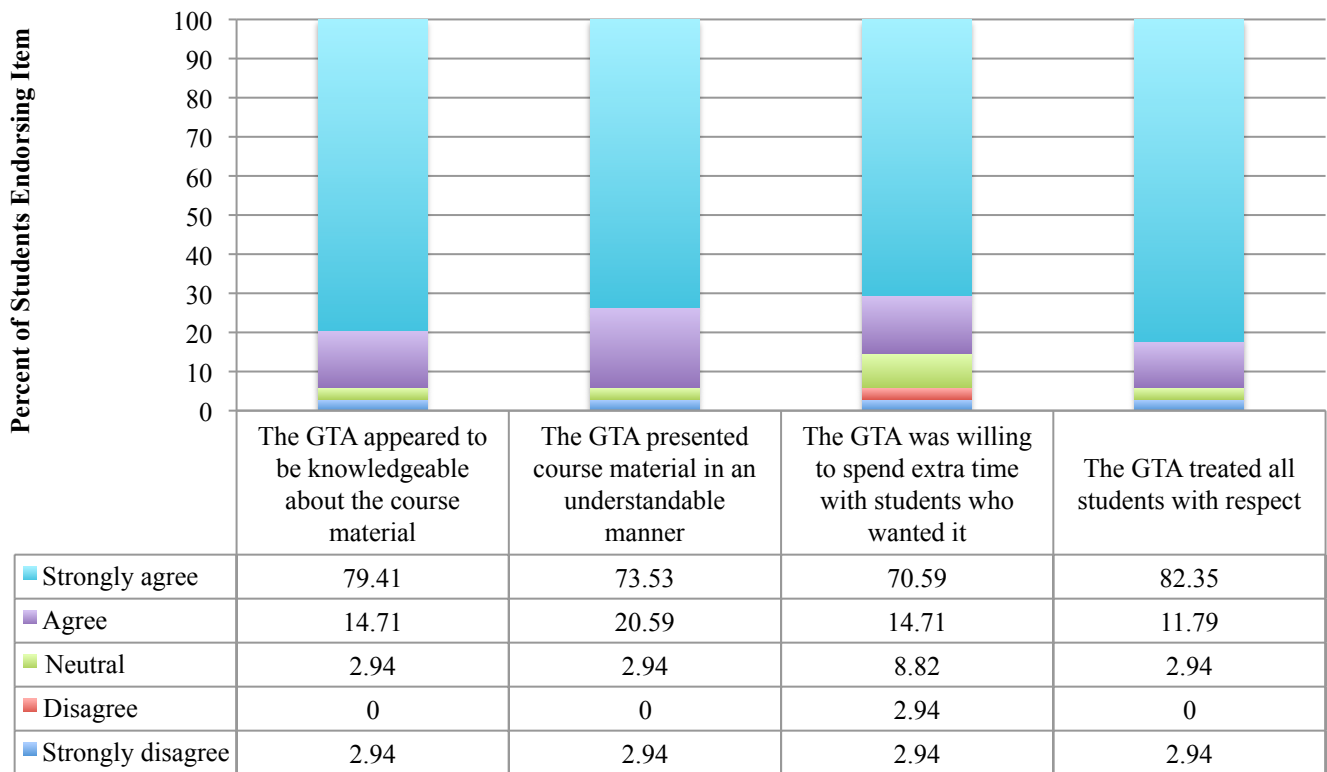


	Please rate the quality of the lectures	How would you rate the overall value of this course?	How would you rate this GTA?
--	---	--	------------------------------

Superior	50	57.1	64.3
Very good	28.6	21.4	35.7
Good	14.3	21.4	0
Fair	0	0	0
Poor	0	0	0

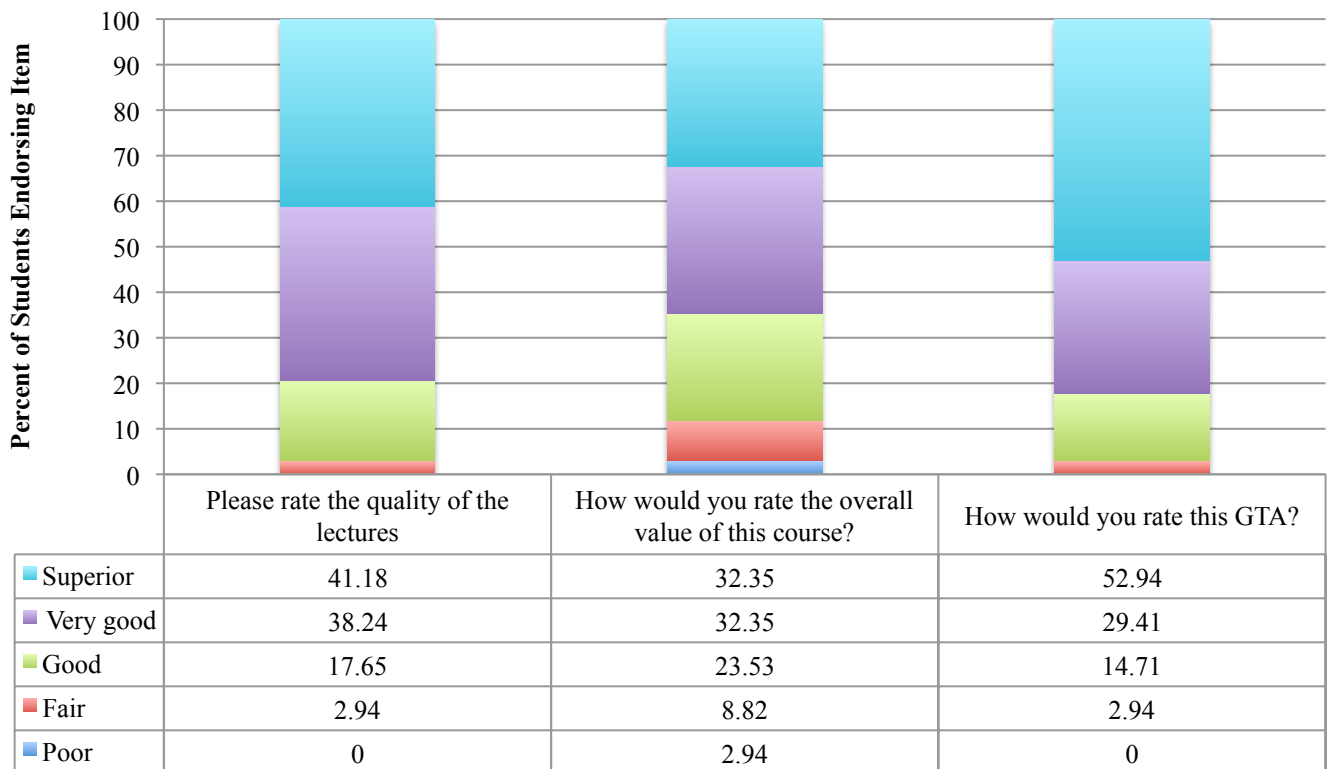
N = 14

Evaluations for Fall 2012



N = 34

Evaluations for Fall 2012



N = 34